



Upper Machinery

UPPER FRAME: All-welded, precision machined unit.

TURNTABLE BEARING WITH INTEGRAL RING GEAR:

Outer race is bolted to upper frame, inner race with internal ring gear is bolted to lower frame. Swing pinion meshes with internal, integral ring gear. A machined surface is provided for mounting turntable bearing.

CONTROL SYSTEM: Remote controlled hydraulic servo for main hoist, aux. hoist and travel. Mechanical linkage type for swing. Working speed can be precisely controlled by lever stroke.

PUMP CONTROL SYSTEM: System reducing pump displacement enables both minute operation and saving energy.

HYDRAULIC SYSTEM: System combining two variable displacement axial piston pumps and two (three; option) fixed displacement gear pumps provides both independent and combined operations of all functions.

Main hoist/aux. hoist/boom hoist — Axial piston motor with counterbalance valve.

Swing motor — Axial piston motor.

Travel motor — Axial piston motors with brake valves. Spring-set/hydraulic-released multiple disc brakes are fitted.

Hydraulic oil reservoir — 295 liter capacity.

LOAD HOIST ASSEMBLY: Front (main) and rear (aux.) operating drums. Each driven by the bi-directional, axial piston motor through reduction gear powering the rope drum in either direction for hoisting or lowering load. 3rd drum equipped as optional extra.

Clutches — Power hydraulic actuated, internal expanding, self adjusting 2-shoe type.

Brakes — External contracting band type operated by foot pedal with locking latch. For crane lifting operation, automatic brake (spring applied, hydraulically released) is applied when control lever in neutral position. For bucket mode, free-fall is available when control lever in neutral position.

Locks — Electrically operated drum lock pawl.

BOOM HOIST ASSEMBLY: Driven by the bi-directional, axial piston motor through reduction gear powering the rope drum in either direction for hoisting or lowering boom.

Brake — Spring applied, hydraulically released multiple disc brake.

Lock — Electrically operated drum lock pawl.

SWING: Driven by axial piston motor, through reduction gear.

Brake — Brake is applied by spring and released by hydraulic cylinder.

Lock — Mechanically operated pin connection frame lock.

Speed — 2.8 rpm

OPERATOR'S CAB: Full vision compartment with safety glass panels, the completely enclosed cab is insulated against noise and vibration.

COUNTERWEIGHT: Removable, 2 blocks mounted on rear end of upper frame by bolts.

Counterweight removal device is available as option.

POWER UNIT:

| | |
|------------------|-------------------------------------|
| Make & Model | HINO HO6CT |
| Type | Water-cooled, 4-cycle diesel engine |
| No. of cylinders | 6 |
| Rated output | 150 ps/2,100 rpm |
| Max. torque | 52 kg-m/1,600 rpm |
| Fuel tank | 290 liters |

Lower Machinery

LOWER FRAME: All welded robust rolled steel, box construction.

SIDE FRAMES: All welded robust rolled steel. Connected to lower frame by links & pins. Retracted or extended by hydraulic cylinder.

ROLLERS: Heat treated, double flanged, mounted on bushings with floating seals requiring no further lubrication.

Bottom — 10 pcs. per side frame.

Top — 3 pcs. per side frame.

DRIVE SPROCKETS: Heat treated, involute splined to drive shaft mounted on antifriction bearings.

IDLERS: Heat treated, mounted on bushings with floating seals requiring no further lubrication.

TRACKS: Heat treated, self cleaning, single lug, multiple hinged shoes, 50 pcs. per side frame.

Shoe width — 810 mm (standard)

Tractor type link shoe (55 pcs. per side frame) is available as option.

TRACK TENSION ADJUSTER: Adjusted by hydraulic cylinders at the idler blocks. Tension can be automatically released when abnormal load occurred on tracks.

TRAVEL AND STEER: Axial piston motor with reduction gear is located at inner drive end of each crawler side frame. Each track is driven simultaneously or individually for straight-line travel, or pivot turn, or the tracks can be counter-rotated for spin turns.

Brake — Spring applied, hydraulically released multiple disc brakes applied automatically when control lever in neutral position.

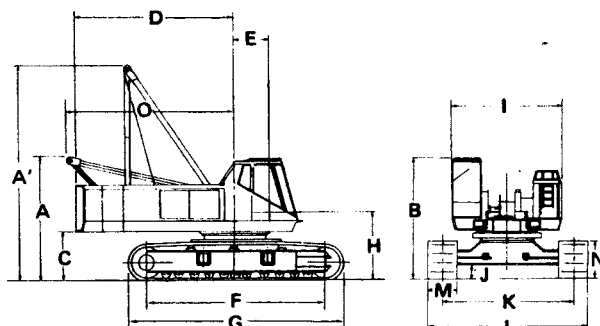
Speed — 4 speed range

1.7/1.0 km/h . . . Pump control "OFF" (ordinary)

0.4/0.19 kg/h . . . Pump control "ON"

General Dimensions

| | | |
|-----|--------------------------------------|---|
| A: | Height over low gantry unit | 3.395m |
| A': | Height over high gantry unit | 5.595m |
| B: | Height of cab | 3.215m |
| C: | Counterweight ground clearance | 1.120m |
| D: | Radius of rear end | 4.165m |
| E: | Center of rotation to boom foot pin | 1.000m |
| F: | Center to center distance of tamblor | 5.000m |
| G: | Overall length of crawler | 5.925m |
| H: | Height from ground to boom foot pin | 1.735m |
| I: | Overall width of house | 3.090m |
| J: | Ground clearance | 0.410m |
| K: | Center to center distance of crawler | extended . . . 3.850m retracted . . . 2.660m |
| L: | Overall width of crawler | extended . . . 4.660m retracted . . . 3.470m |
| M: | Shoe width | 0.810m |
| N: | Height of shoe (standard) | 1.025m |
| O: | Tail swing radius at low gantry | 4.790m |



We are constantly improving our products and therefore reserve the right to change designs and specifications.

SUMITOMO (S.H.I.) CONSTRUCTION MACHINERY CO., LTD.

International sales Div., 1-21, Kanda, Nishiki-cho, Chiyoda-ku, Tokyo, Japan

Telex: J27961 (AAB: SHIKENKI) Fax: Tokyo (03) 233-0138 Phone: (03) 296-5284

Printed in Japan



CRANE BOOMS: Lattice construction; round tubular main chords, alloy hi-tens steel, with bracing of round steel tubing.

| | |
|--|---|
| Boom connections | In-line pin connections. |
| Basic boom | Two-piece, 12.2m basic length; 6.1m base and 6.1m top section; 1.2m deep and 1.27m wide at connections. |
| Boom point machinery | Five head sheaves mounted on anti-friction bearings. |
| Boom extensions | Available in 3.05m, 6.1m and 9.15m lengths with pendants. Maximum boom length 54.85m. |
| Jib | Two-piece; 9.15 m basic length with 4.6m long base and top sections, available in 4.6 m jib extension. Maximum jib length 18.3 m. |
| Boom plus jib length | 42.70m + 18.3m |
| Angle main chords, with bracing of angle steel is available as option. | |

HOOK BLOCK:

| | |
|------------------------------|----------------|
| 65 t, five sheaves | Standard |
| 20 t, one sheave | Optional extra |
| 6.5 t, no sheave | Optional extra |

HIGH GANTRY: Retractable high gantry.

LINE SPEED:

| Drums | Root dia. | Type | Line speed (Hoisting, Lowering) | | Cable dia. |
|--------------------|-----------|------------------|---------------------------------|--------------------------------|------------|
| | | | Pump control "OFF" (Ordinary) | Pump control "ON" | |
| Main hoist (Front) | 448mm | Parallel grooved | High 80 m/min Low 40 m/min | High 15 m/min Low 7.5 m/min | 22.4mm |
| Aux. hoist (Rear) | 448mm | Parallel grooved | High 80 m/min Low 40 m/min | High 15 m/min Low 7.5 m/min | 22.4mm |
| 3rd drum (option) | 320mm | Parallel grooved | 65 m/min | 12 m/min | 16mm |
| Boom hoist | 320mm | Parallel grooved | 66 m/min | 12 m/min | 16mm |

Hoisting line speed varies with load.

HOIST REEVING:

| | Main hoist | | | | | | | | | |
|----------------------|------------|------|----|------|----|------|----|------|----|-----|
| No. of parts of line | 10 | 9 | 8 | 7 | 6 | 5 | 4 | 3 | 2 | 1 |
| Max. load (t) | 65 | 58,5 | 52 | 45,5 | 39 | 32,5 | 26 | 19,5 | 13 | 6,5 |

WORKING WEIGHT AND GROUND PRESSURE:

| Shoe width | Weight | Pressure |
|----------------------|--------|-------------------------|
| 810mm (standard) | 58.5t | 0.67 kg/cm ² |
| 810mm (tractor type) | 61.5t | 0.71 kg/cm ² |

With basic boom and counterweight.

Weight without counterweight and front attachment: approx. 34t (with standard shoe)

COUNTERWEIGHT: "A" 10.85 t, "B" 9.15 t. Total 20 t

SAFETY DEVICE: Hook over hoist limiting device, boom over hoist limiting device, boom angle indicator, boom back stop, drum pawl lock for main, aux. and boom hoist drum, load moment limiter (option)

GRADEABILITY: 30% (17°)

We are constantly improving our products and therefore reserve the right to change designs and specifications.

SUMITOMO (S.H.I.) CONSTRUCTION MACHINERY CO., LTD.

International sales Div., 1-21, Kanda, Nishiki-cho, Chiyoda-ku, Tokyo, Japan
Telex: J27961 (AAB: SHIKENKI) Fax: Tokyo (03) 233-0138 Phone: (03) 296-5284



CLAMSHELL BOOMS: Lattice construction; round tubular main chords, alloy hi-ten steel, with bracing of round steel tubing.

Boom connections . . . In-line pin connections.

Basic boom . . . Two-piece, 12.2m basic length, 6.1m base and 6.1m top section; 1.2m deep and 1.27m wide at connections.

Boom point machinery . . . Five head sheaves mounted on anti-friction bearings.

Boom extensions . . . Available in 3.05m, 6.10m and 9.15m lengths with pendants. Maximum boom length 21.35m.

MAXIMUM CLAMSHELL RATING: 6.5t.

COUNTERWEIGHT: 10.85t

SAFETY DEVICE: Boom over hoist limiting device, drum pawl lock for closing, holding and boom hoist drum, swing lock, safety valve in hydraulic circuit, boom angle indicator, boom back stop.

TAGLINE WINDER: Spring-wound, drum type mounted on boom, single stage or double stage type. Hydraulic motor driven tagline, mounted on revolving frame.

GRADEABILITY: 30% (17°)

With basic boom, 1.0m³ bucket and counterweight.

LINE SPEED:

| Drums | Root dia. | Type | Line speed (Hoisting, Lowering) | | |
|-------------------|-----------|------------------|---------------------------------|--------------------------------|------------|
| | | | Pump control "OFF" (Ordinary) | Pump control "ON" | Cable dia. |
| Holding | 448mm | Parallel grooved | High 80 m/min Low 40 m/min | High 15 m/min Low 7.5 m/min | 22.4mm |
| Closing | 448mm | Parallel grooved | High 80 m/min Low 40 m/min | High 15 m/min Low 7.5 m/min | 22.4mm |
| 3rd drum (option) | 320mm | Parallel grooved | 65 m/min | 12 m/min | 16mm |
| Boom hoist | 320mm | Parallel grooved | 66 m/min | 12 m/min | 16mm |

Notes:

1. Above line speed is based on first layer.
2. Above line speed varies with load.

GANTRY: Retractable high gantry

WORKING WEIGHT AND GROUND PRESSURE:

| Shoe width | Weight | Pressure |
|------------|--------|-------------------------|
| 810 mm | 51.4 t | 0.59 kg/cm ² |

Notes:

1. With basic boom, 1.0m³ bucket and counterweight.
2. Weight without counterweight and front attachment: approx. 34t

LS-120RH-5 CLAMSHELL CAPACITIES AND WORKING RANGES:

(in metric tons)

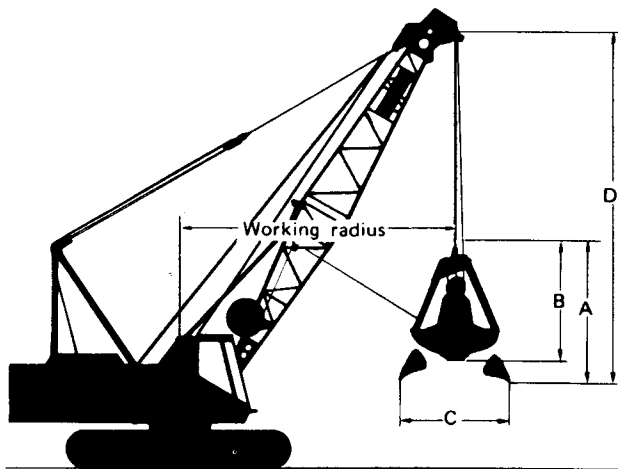
| Boom length (m) | | | | | | | | | | | |
|-----------------|-------|-------|-------|-------|-------|-------|-------|-------|-------|-------|-------|
| 12.20 | | | 15.25 | | | 18.3 | | | 21.35 | | |
| R (m) | A (°) | L (t) | R (m) | A (°) | L (t) | R (m) | A (°) | L (t) | R (m) | A (°) | L (t) |
| 5.5 | 70 | 6.5 | | | | | | | | | |
| 6.0 | 67 | 6.5 | | | | | | | | | |
| 7.0 | 62 | 6.5 | 7.0 | 68 | 6.5 | | | | | | |
| 8.0 | 57 | 6.5 | 8.0 | 64 | 6.5 | 8.0 | 69 | 6.5 | | | |
| 9.0 | 51 | 6.5 | 9.0 | 60 | 6.5 | 9.0 | 65 | 6.5 | 9.0 | 69 | 6.5 |
| 10.0 | 44 | 6.5 | 10.0 | 55 | 6.5 | 10.0 | 62 | 6.5 | 10.0 | 66 | 6.5 |
| 11.7 | 30 | 6.5 | 12.0 | 45 | 6.5 | 12.0 | 54 | 6.5 | 12.0 | 60 | 6.5 |
| | | | 14.0 | 33 | 6.0 | 14.0 | 46 | 5.8 | 14.0 | 53 | 5.7 |
| | | | 14.3 | 30 | 5.8 | 16.0 | 36 | 4.8 | 16.0 | 46 | 4.7 |
| | | | | | | 16.9 | 30 | 4.5 | 18.0 | 38 | 4.0 |
| | | | | | | | | | 19.6 | 30 | 3.7 |

R: Working radius A: Boom angle L: Rated load

Capacities shown are in metric tons and are determined according to British Standard.

Notes:

1. Total weight of bucket and load shall not exceed above rated loads.
2. Boom length shall not exceed 21.35m.
3. Apparent specific gravity of lifting material:
 - Earth 1.7~1.8t/m³
 - Gravel 1.8~2.0t/m³
4. High gantry is required and side frames must be extended for all operating conditions.



(in meters)

| Bucket capacity | | 0.6m ³ | 0.8m ³ | 1.0m ³ | 1.2m ³ |
|-----------------|--------------------------------|-------------------|-------------------|-------------------|-------------------|
| A | Bucket overall height (opened) | 2.8 | 3.3 | 3.3 | 3.2 |
| B | Bucket overall height (closed) | 2.4 | 2.7 | 2.8 | 2.8 |
| C | Bucket opening width | 2.3 | 2.5 | 2.5 | 2.9 |
| D | Bucket clearance | 4.6 | 5.1 | 5.1 | 5.0 |

(Based on manufacturer's std. bucket)

Designs and specifications subject to change without notice. Illustrations not binding in detail.

SUMITOMO (S.H.I.) CONSTRUCTION MACHINERY CO., LTD.

International sales Div., 1-21, Kanda, Nishiki-cho, Chiyoda-ku, Tokyo, Japan



DRAWLING BOOMS: Lattice construction; round tubular main chords, alloy, hi-tens steel, with bracing of round steel tubing.

Boom connections . . . in-line pin connections.

Basic boom . . . Two-piece, 12.2m basic length; 6.1m base and 6.1m top section; 1.2m deep and 1.27m wide at connections.

Boom point machinery . . . One head sheave mounted on anti-friction bearings.

Boom extensions . . . Available in 3.05m, 6.1m and 9.14m lengths with pendants.

Angle main chords, with bracing of angle steel is available as option.

MAXIMUM DRAGLINE RATING: 5.5t

GANTRY: Retractable high gantry.

WORKING WEIGHT AND GROUND PRESSURE:

| Shoe width | Weight | Pressure |
|------------|------------------------|-------------------------|
| 810mm | 50.6 t with basic boom | 0.58 kg/cm ² |
| | 51.4t with 21.35m boom | 0.59 kg/cm ² |

(With boom, 1.0m³ bucket and counterweight "A")

COUNTERWEIGHT: "A" 10.85t

SAFETY DEVICE: Boom hoist limiting device, boom angle indicator, boom back stop, drum lock pawl for front, rear and boom hoist.

FAIRLEAD: Full-revolving type.

GRADEABILITY: 30% (17°)

LINE SPEED:

| Drums | Root dia. | Type | Line speed (Hoisting, Lowering) | | Line pull | Cable dia. |
|-------------------|-----------|------------------|---------------------------------|--------------------------------|-----------|------------|
| | | | Pump control "OFF" (Ordinary) | Pump control "ON" | | |
| In haul | 448mm | Parallel grooved | High 80 m/min Low 40 m/min | High 15 m/min Low 7.5 m/min | 15.0 | 22.4mm |
| Hoisting | 448mm | Parallel grooved | High 80 m/min Low 40 m/min | High 15 m/min Low 7.5 m/min | 15.0 | 22.4mm |
| 3rd drum (option) | 320mm | Parallel grooved | 65 m/min | 12 m/min | — | 16mm |
| Boom hoist | 320mm | Parallel grooved | 66 m/min | 12 m/min | — | 16mm |

Above line speed varies with load.

LS-120RH₅ DRAGLINE CAPACITIES AND WORKING RANGES:

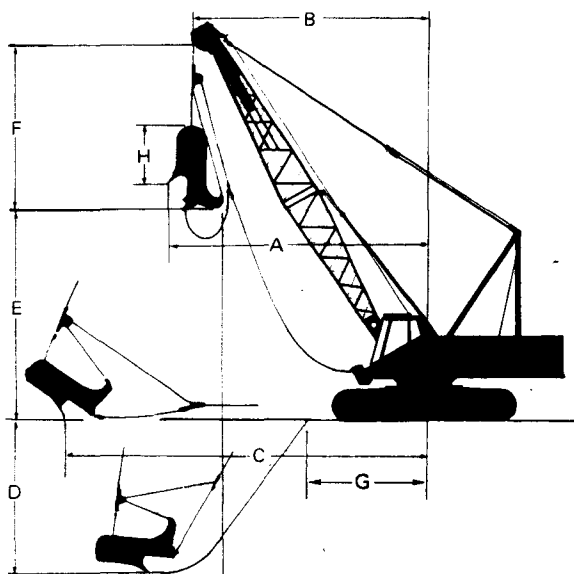
(in metric tons)

| Boom length (m) | | | 12.20 | | | 15.25 | | | 18.30 | | | 21.35 | | |
|-----------------|-------------------------------|-----------------------|-------|------|------|-------|------|------|-------|------|------|-------|------|------|
| Boom angle (°) | | | 30 | 40 | 50 | 30 | 40 | 50 | 30 | 40 | 50 | 30 | 40 | 50 |
| Rated load (t) | | | 5.5 | 5.5 | 5.5 | 5.5 | 5.5 | 5.5 | 4.7 | 5.4 | 5.5 | 3.8 | 4.4 | 5.5 |
| A | Max. dumping radius (m) | 0.6m ³ | 12.4 | 11.2 | 9.7 | 15.0 | 13.5 | 11.7 | 17.6 | 15.8 | 13.6 | 20.3 | 18.2 | 15.6 |
| | | 0.8~1.0m ³ | 12.5 | 11.3 | 9.8 | 15.1 | 13.6 | 11.8 | 17.7 | 15.9 | 13.7 | 20.4 | 18.3 | 15.7 |
| | | 1.2m ³ | 12.6 | 11.4 | 9.9 | 15.2 | 13.7 | 11.9 | 17.8 | 16.0 | 13.8 | 20.5 | 18.4 | 15.8 |
| B | Working radius (m) | | 12.0 | 10.8 | 9.3 | 14.6 | 13.1 | 11.3 | 17.2 | 15.4 | 13.2 | 19.9 | 17.8 | 15.2 |
| C | Digging radius on G.L. (m) | | 15.4 | 15.0 | 14.2 | 18.7 | 18.2 | 17.2 | 22.0 | 21.4 | 20.2 | 25.3 | 24.6 | 23.3 |
| D | Digging depth (m) | | 8.3 | 8.1 | 7.5 | 10.8 | 10.5 | 9.8 | 13.4 | 12.9 | 12.0 | 15.9 | 15.3 | 14.3 |
| E | Dumping height (m) | 0.6~0.8m ³ | 3.6 | 5.4 | 6.9 | 5.1 | 7.3 | 9.2 | 6.6 | 9.3 | 11.6 | 8.1 | 11.2 | 13.9 |
| | | 1.0~1.2m ³ | 2.8 | 4.6 | 6.1 | 4.3 | 6.5 | 8.4 | 5.8 | 8.5 | 10.8 | 7.3 | 10.4 | 13.1 |
| F | Bucket clearance (m) | 0.6~0.8m ³ | 3.95 | | | | | | | | | | | |
| | | 1.0~1.2m ³ | 4.75 | | | | | | | | | | | |

- Weight of bucket plus material shall not exceed above rated loads.
- Boom length shall not exceed 21.35m.
- High gantry is required and side frame must be extended for all operating conditions.
- Dimension C and D vary considerably depending on digging conditions and skill of the operator.
- Apparent specific gravity of lifting material:
Earth 1.7 ~ 1.8 t/m³
Gravel 1.8 ~ 2.0 t/m³

Kind of bucket (Manufacturer's specification)

| Bucket capacity (m ³) | Weight (t) |
|-----------------------------------|------------|
| 0.6 | 0.93 |
| 0.8 | 1.17 |
| 1.0 | 1.40 |
| 1.2 | 1.60 |



We are constantly improving our products and therefore reserve the right to change designs and specifications.

SUMITOMO (S.H.I.) CONSTRUCTION MACHINERY CO., LTD.

International sales Div., 1-21, Kanda, Nishiki-cho, Chiyoda-ku, Tokyo, Japan

Telex: J27961 (AAB: SHIKENKI) Fax: Tokyo (03) 233-0138 Phone: (03) 296-5284

**LS-120RH₅ CRANE CAPACITIES (WITH CRANE BOOM):**

(in metric tons)

| Working radius (m) | Boom length (m) | | | | | | | | | | | | | | |
|--------------------|-----------------|-------|-------|-----------|-------|----------|-----------|-------|-------|----------|-------|-------|-------|-------|-------|
| | 12.20 | 15.25 | 18.30 | 21.35 | 24.40 | 27.45 | 30.50 | 33.55 | 36.60 | 39.65 | 42.70 | 45.75 | 48.80 | 51.85 | 54.90 |
| 3.7 | 65.00 | | | | | | | | | | | | | | |
| 4.0 | 65.00 | 60.30 | | | | | | | | | | | | | |
| 4.5 | 56.55 | 55.55 | | | | | | | | | | | | | |
| 5.0 | 47.20 | 47.00 | 46.90 | | | | | | | | | | | | |
| 5.5 | 40.40 | 40.30 | 40.20 | 40.05 | | | | | | | | | | | |
| 6.0 | 35.35 | 35.20 | 35.10 | 35.00 | 34.85 | | | | | | | | | | |
| 7.0 | 28.10 | 28.00 | 27.90 | 27.80 | 27.65 | 27.45 | 27.35 | | | | | | | | |
| 8.0 | 23.25 | 23.15 | 23.00 | 22.90 | 22.80 | 22.65 | 22.55 | 22.45 | 22.35 | | | | | | |
| 9.0 | 19.80 | 19.65 | 19.55 | 19.45 | 19.35 | 19.20 | 19.10 | 19.00 | 18.90 | 18.75 | 18.55 | | | | |
| 10.0 | 17.25 | 17.15 | 17.00 | 16.90 | 16.80 | 16.70 | 16.55 | 16.45 | 16.35 | 16.20 | 16.10 | 16.00 | 15.35 | | |
| 12.0 | 13.9/11.7 | 13.35 | 13.25 | 13.15 | 13.05 | 12.90 | 12.80 | 12.70 | 12.60 | 12.45 | 12.35 | 12.25 | 12.10 | 11.20 | |
| 14.0 | | 10.95 | 10.80 | 10.70 | 10.60 | 10.50 | 10.35 | 10.25 | 10.15 | 10.05 | 9.90 | 9.80 | 9.70 | 9.55 | 8.45 |
| 16.0 | | | 9.00 | 8.90 | 8.75 | 8.65 | 8.55 | 8.40 | 8.30 | 8.20 | 8.10 | 7.95 | 7.85 | 7.75 | 7.55 |
| 18.0 | | | | 7.65 | 7.55 | 7.45 | 7.30 | 7.20 | 7.05 | 6.95 | 6.80 | 6.70 | 6.60 | 6.50 | 6.30 |
| 20.0 | | | | 6.85/19.6 | 6.55 | 6.30 | 6.20 | 6.10 | 6.00 | 5.85 | 5.75 | 5.65 | 5.50 | 5.40 | 5.30 |
| 22.0 | | | | | 5.60 | 5.50 | 5.40 | 5.25 | 5.15 | 5.05 | 4.95 | 4.80 | 4.70 | 4.60 | 4.45 |
| 24.0 | | | | | | 4.80 | 4.70 | 4.55 | 4.45 | 4.35 | 4.20 | 4.10 | 4.00 | 3.90 | 3.70 |
| 26.0 | | | | | | 4.4/24.9 | 4.15 | 4.05 | 3.95 | 3.80 | 3.60 | 3.50 | 3.40 | 3.25 | 3.15 |
| 28.0 | | | | | | | 3.65/27.5 | 3.55 | 3.45 | 3.30 | 3.10 | 3.00 | 2.85 | 2.75 | 2.65 |
| 30.0 | | | | | | | | 3.15 | 3.05 | 2.90 | 2.75 | 2.60 | 2.40 | 2.35 | 2.20 |
| 32.0 | | | | | | | | | 2.70 | 2.60 | 2.40 | 2.25 | 2.05 | 1.95 | 1.75 |
| 34.0 | | | | | | | | | | 2.30 | 2.10 | 1.95 | 1.75 | 1.60 | 1.40 |
| 36.0 | | | | | | | | | | 2.1/35.4 | 1.80 | 1.65 | 1.40 | 1.25 | 1.10 |
| 38.0 | | | | | | | | | | | 1.50 | 1.35 | 1.15 | 0.95 | 0.80 |

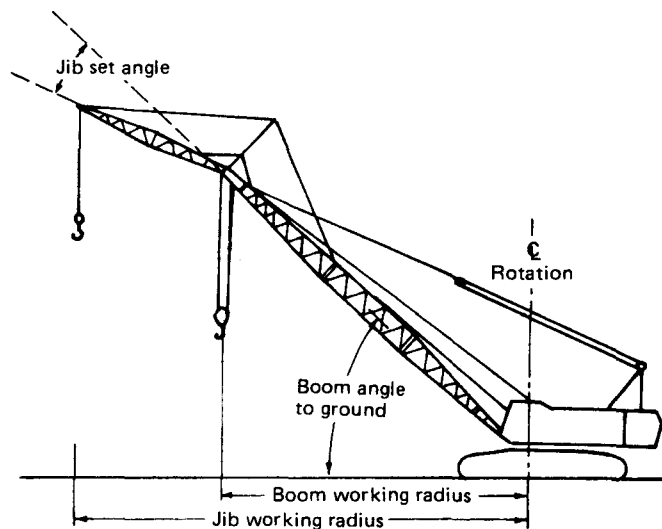
Notes:

- Capacities shown are in metric tons and are determined according to BS (British Standard, 1981) – over the side – with machine standing level on firm supporting surface under ideal job conditions. Deductions from the lifting crane capacities must be made for weight of hook block.

| | | | |
|--------------------------|-------|-------|-------|
| Kind of hook block | 65 t | 20 t | 6.5 t |
| Weight of hook block (t) | 0.8 t | 0.4 t | 0.3 t |

- Side frame must be extended for all operating conditions.
- When handling loads by main hoist line on boom with jib fitted, the following deductions must be made from above crane capacity.

| | | | |
|---------------------------|------|-------|-------|
| Jib length (m) | 9.15 | 13.70 | 18.30 |
| Weight to be deducted (t) | 1.5 | 2.1 | 2.8 |

**LS-120RH₅ JIB CAPACITIES:**

(in metric tons)

| Jib length (m) | Jib set angle | Max. jib Capacities |
|----------------|---------------|---------------------|
| 9.15 | 10° | 6.5 |
| | 30° | 5.0 |
| 13.70 | 10° | 6.5 |
| | 30° | 5.0 |
| 18.30 | 10° | 4.5 |
| | 30° | 3.2 |

Notes:

- The jib capacities are equal to the crane lifting capacities of the main boom on which the jib is fixed except that they are restricted by the maximum jib capacities shown left.
- Jib working radius does not exceed the working radius of the main boom which fits the jib.
- Deductions from the jib capacities must be made for weight of jib hook block (0.3 t).
- Available boom length to attach the jib is from 21.35m to 42.7m. The maximum jib length is 18.30m.
- The jib set angle to boom must not exceed 30°.

We are constantly improving our products and therefore reserve the right to change designs and specifications.

SUMITOMO (S.H.I.) CONSTRUCTION MACHINERY CO., LTD.

K & T Bldg. 1-28-44, Shinkawa, Chuo-ku, Tokyo 104, Japan

I 206 0287-BS

Phone: (03) 297-8822 Fax: (03) 297-9849 Telex: I 27961 SHIKENKI

Crane 65 metric tons

LS-120RH5 CRANE WORKING RANGES:

